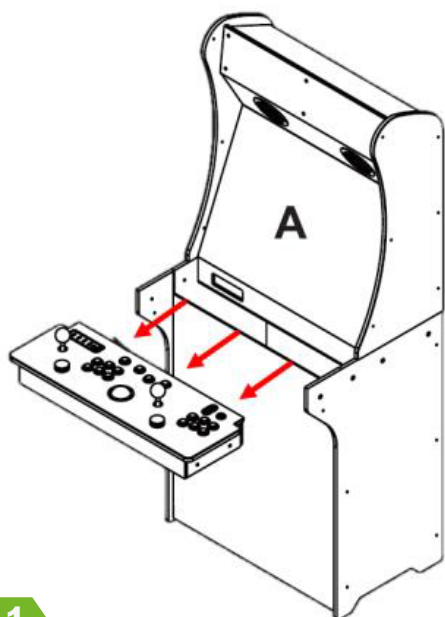


HOW TO REPLACE SPINNER (HA8800)

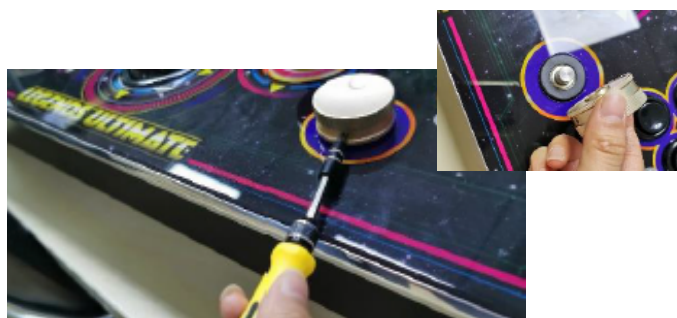
Tools you need:

- Phillips screwdriver
- 2.0 hex key



Step 1

Remove the control top from the arcade.



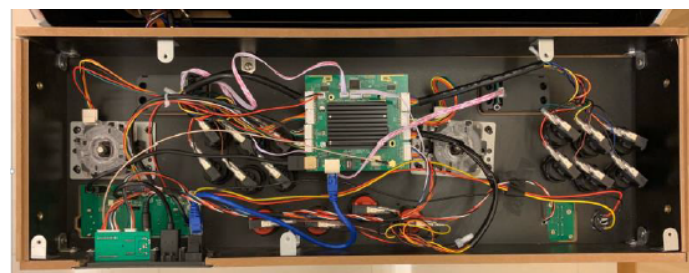
Step 2

Use the 2.0 hex key to remove the spinner.



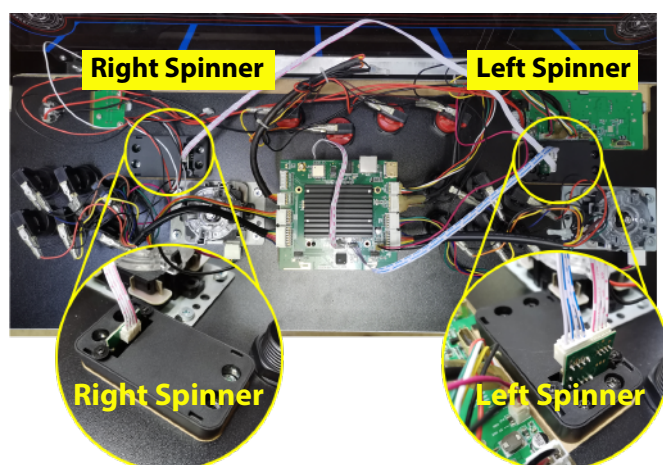
Step 3

Turn the control top upside down and remove the 5 screws on the bottom of the control top.



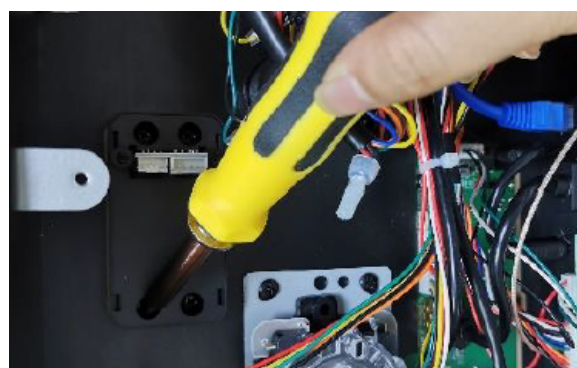
Step 4

Remove the bottom cover from the control top.



Step 5

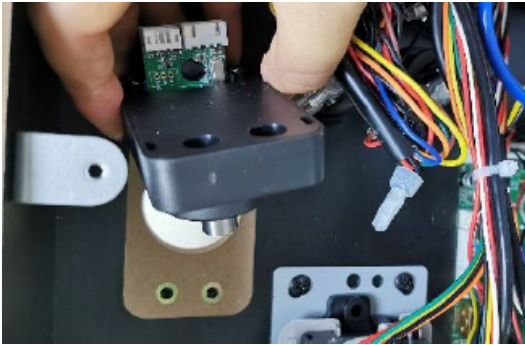
Disconnect the cables on the spinner that you'd like to replace.



Step 6

Use a screwdriver to loosen the screws.

HOW TO REPLACE SPINNER (HA8800)



Step 7

Remove the spinner.



Step 8

Prepare a new spinner.



Step 9

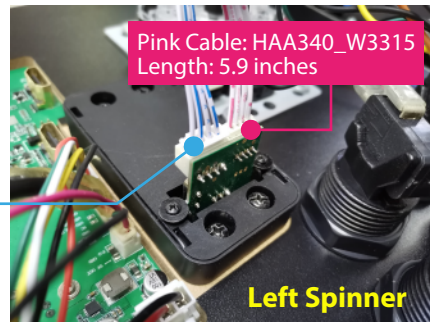
Place the new spinner in the original spot.



Step 10

Fasten 4 screws to secure the spinner.

Blue Cable: #HAA340_W55
Length: 21.65 inches



Pink Cable: HAA340_W3315
Length: 5.9 inches

Left Spinner

Pink Cable: #HAA340_W55
Length: 21.65 inches



Right Spinner

Step 11

Connect the cables to the spinner.

- 5.9 inch blue cable (#HAA340_W3315): To connect the Left Spinner and the Mainboard.
- 21.65 inch pink cable (#HAA340_W55): To connect the Left Spinner and the Right Spinner.



Step 12

Put the control top cover back and fasten the screws.



Step 13

Fasten the spinner cap with the hex key.