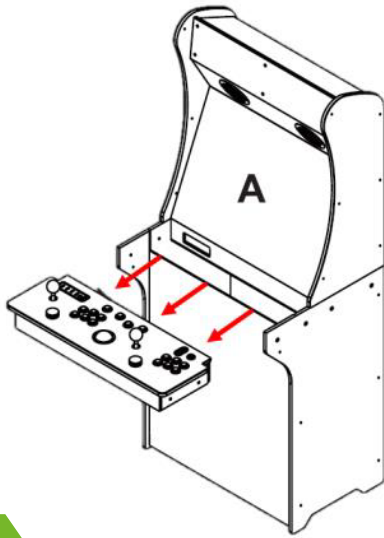


# HOW TO REPLACE SPINNER (HA8801)

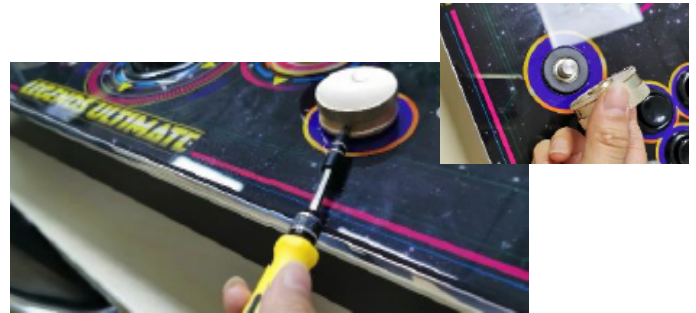
Tools you need:

- Phillips screwdriver
- 2.0 hex key



## Step 1

Remove the control top from the arcade.



## Step 2

Use the 2.0 hex key to remove the spinner.



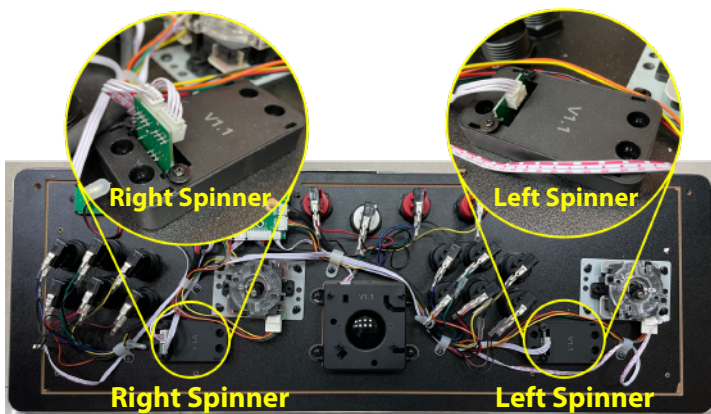
## Step 3

Turn the control top upside down and remove the screws on the bottom of the control top.



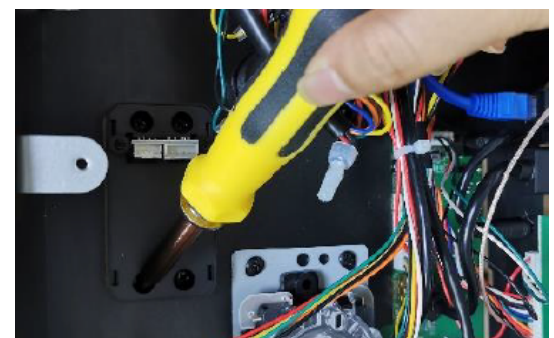
## Step 4

Open up the control top and pull out the pinball kit cable carefully.



## Step 5

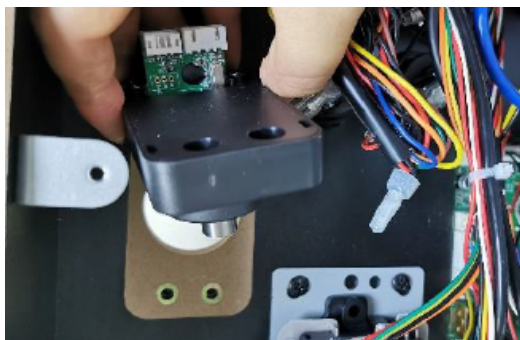
Disconnect the cables on the spinner that you'd like to replace.



## Step 6

Use a screwdriver to loosen the screws.

# HOW TO REPLACE SPINNER (HA8801)



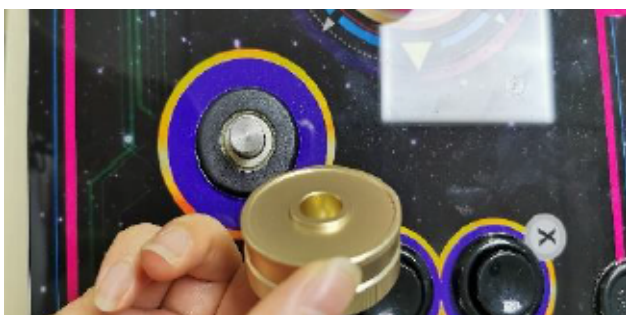
## Step 7

Remove the spinner.



## Step 8

Prepare a new spinner.



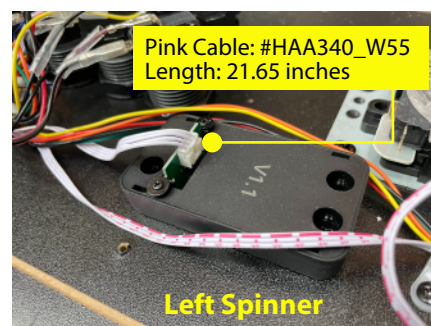
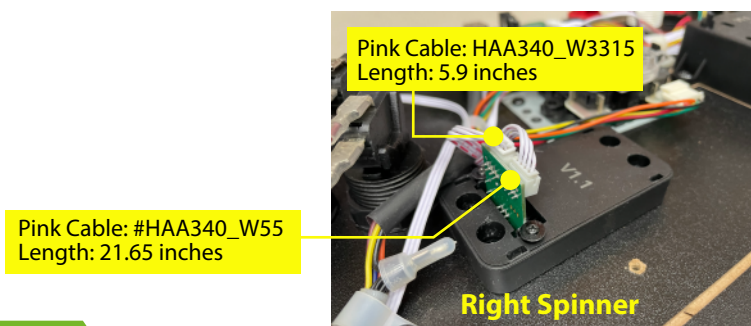
## Step 9

Place the new spinner in the original spot.



## Step 10

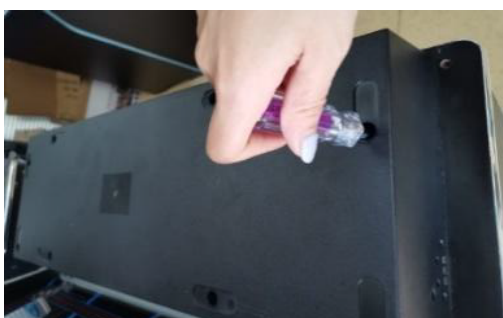
Fasten 4 screws to secure the spinner.



## Step 11

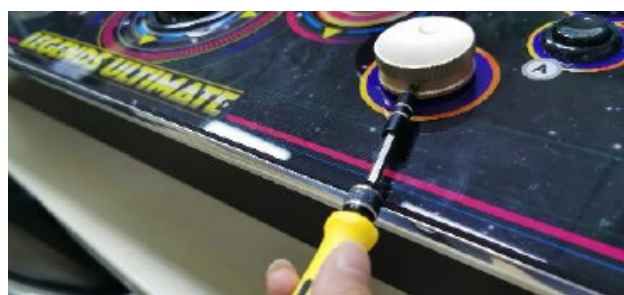
Connect the cables to the spinner.

- 5.9 inch pink cable (#HAA340\_W3315): To connect the Right Spinner and the Mainboard.
- 21.65 inch pink cable (#HAA340\_W55): To connect the Right Spinner and the Left Spinner.



## Step 12

Put the control top cover back and fasten the screws.



## Step 13

Fasten the spinner cap with the hex key.