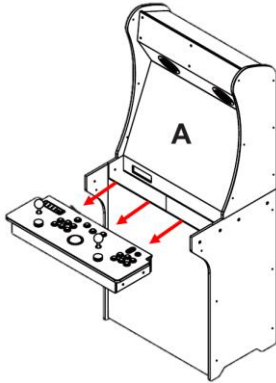


## Instruction Manual for CTR board

Updated: 2020-10-16

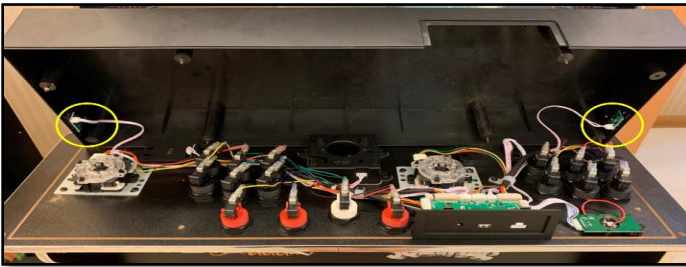
Difficulty Level: ★★★★★☆



1. Remove the screws attaching the control deck to the cabinet. Slide out the control deck and carefully unplug the rear connecting cables.



2. Flip the control deck's top portion upside down and remove all 8 screws on the bottom of the control deck.



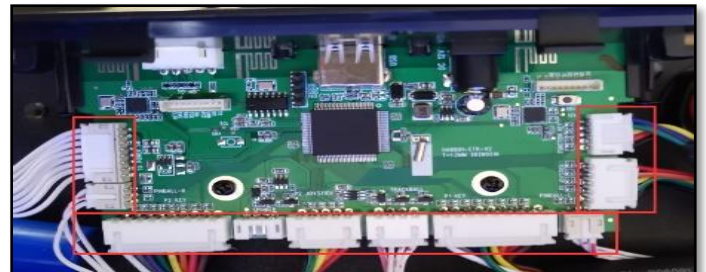
3. Carefully remove the control deck top and disconnect the Pinball cables from the sides.



4. Carefully remove the screws that holds the CTR board on both sides.



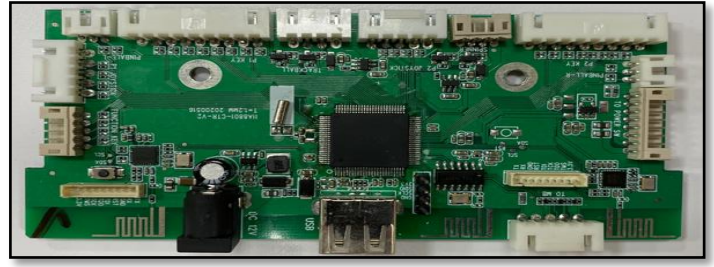
5. Remove both screws on the CTR board.



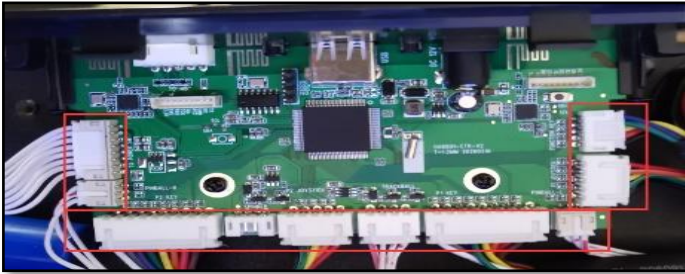
6. Unplug all cables around the CTR board.



7. Unscrew both screws on the side to remove the CTR board.



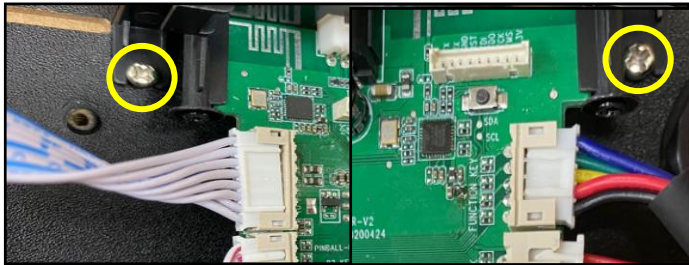
8. Prepare a new CTR board.



9. Reconnect all wires.



10. Fasten both screws circled in yellow.



11. Carefully remove the screws that holds the CTR board on both sides.



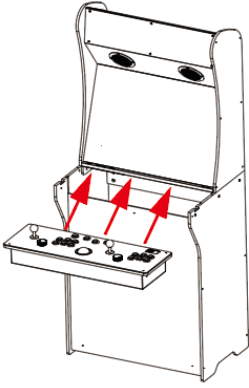
12. Fasten the screws circled in yellow



13. Attach the Pinball cables from step 3.



14. Attach all 8 screws from step 2.



15. Reinsert the control deck, attach the cables, and secure with screws from step 1.