

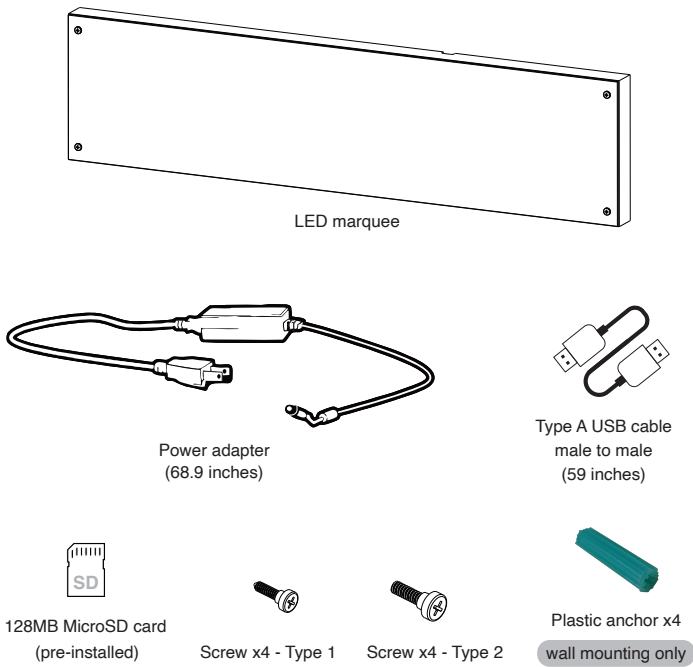
LEGENDS BITPIXEL

INSTRUCTION MANUAL

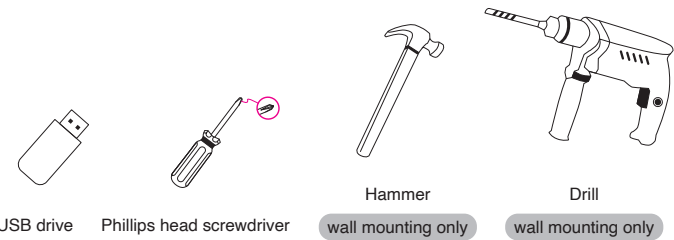


TOOLS/PARTS REQUIRED

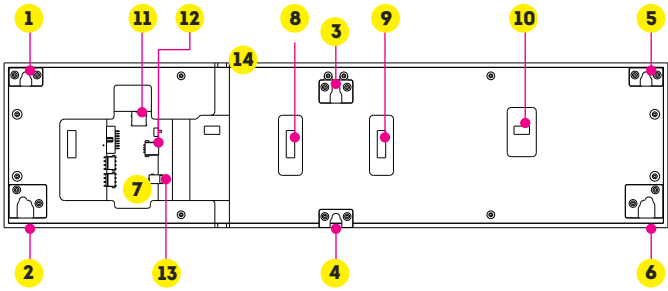
• TOOLS/PARTS INCLUDED



• TOOLS/PARTS NEEDED BUT NOT INCLUDED



LEGENDS BITPIXEL FEATURES

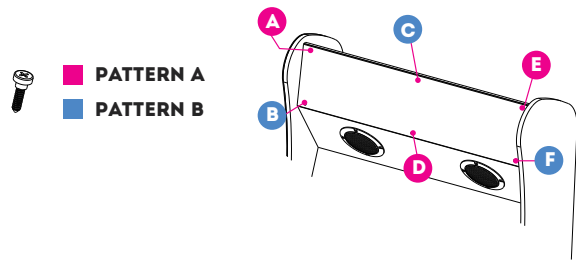


- | | | | |
|-------|----------------------|---|---------------|
| ① - ⑥ | Mounting brackets | ⑪ | MicroSD slot |
| ⑦ | Control board | ⑫ | USB port |
| ⑧ - ⑨ | IDC cable | ⑬ | DC input |
| ⑩ | LED panel power slot | ⑭ | Cable grooves |

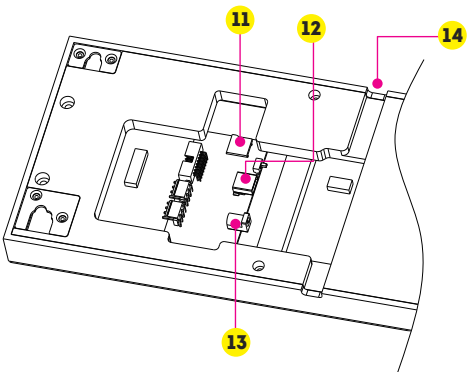
ASSEMBLY STEPS

• GENERAL SETUP AND LEGENDS ULTIMATE INSTALLATION

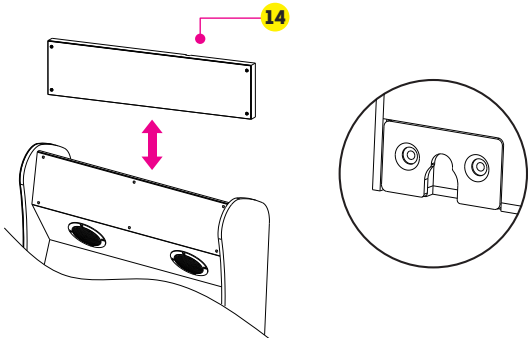
Step 1. Please note the screw pattern specific to your Legends Ultimate: Pattern A or Pattern B, which is indicated below. If you are not installing the BitPixel on a Legends Ultimate, please proceed to Step 2. Pattern A: Replace screws A, D, E with the included screws, either Type 1 or Type 2, for best fit. Pattern B: Replace screws B, C, F with the included Type 1 screws. If the included screws do not fit your Legends Ultimate, please contact support@atgames.net for assistance.



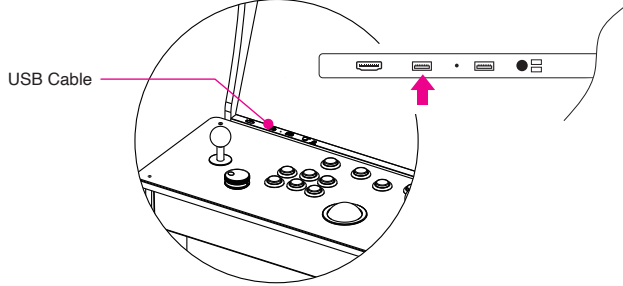
Step 2. Plug the Type A USB cable Male to Male into the USB port ⑫.
Step 3. Plug the included AC adapter in to the DC input ⑬.



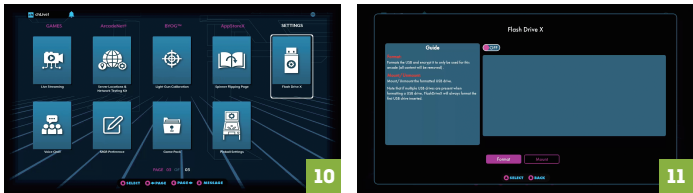
Step 4. Run the cables through the cable groove ⑭ and mount the LED marquee to the 3 screws from Step 1. For other Legends Arcade Family devices, you can proceed to Step 5 without mounting.



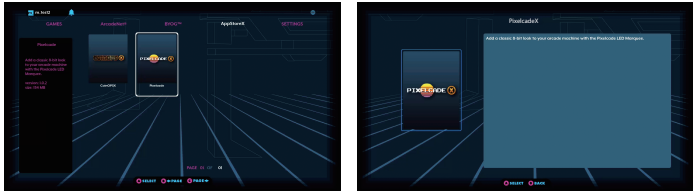
Step 5. Insert the USB cable from Step 3 into the Legends Ultimate's or other Legends Arcade Family device's USB port or USB hub (powered is recommended for maximum performance).



Step 6. Plug in the marquee's AC adapter. The marquee should now display default images from the microSD card.
Step 7. Insert a USB drive into the Legends Ultimate's USB port. You may use an existing Flash Drive X formatted drive for this step. Note: Insert a USB drive into the Legends Ultimate's or other Legends Arcade Family device's USB port (minimum USB 2.0 and 16GB recommended)
Step 8. Power on the Legends Ultimate or other Legends Arcade Family device. If you already have a Flash Drive X-formatted drive, proceed to Step 12.
Step 9. Go to the SETTINGS tab and select Flash Drive X.
Step 10. Format the USB drive. Note: Flash Drive X will format the first available USB drive, so make sure no other USB drives are inserted other than the USB drive you have prepared for the BitPixel.



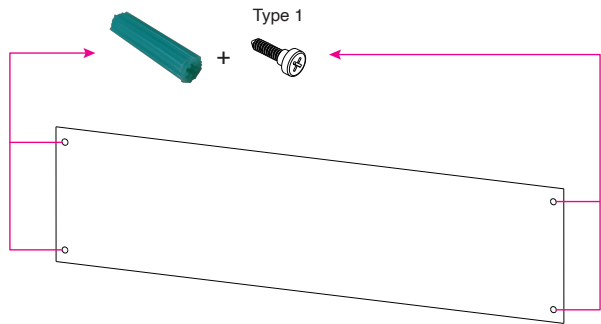
Step 11. Go to the AppStoreX tab and select and launch the PixelcadeX app.



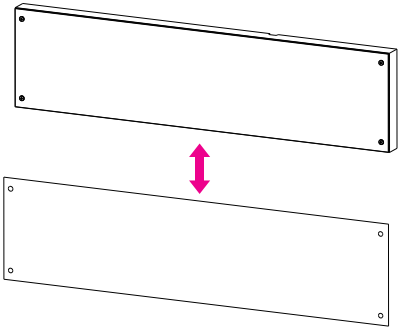
Step 12. Once your Legends Ultimate or other Legends Arcade Family device establishes communication with the BitPixel, it will display marquees or text for most built-in highlighted and selected games and menu items.
Step 13. Each time you restart your Legends Ultimate, launch the PixelcadeX app to communicate with the BitPixel.

• WALL MOUNTING INSTALLATION (OPTIONAL)

Step 1. Mark the positions of the four holes on the left and right sides of the BitPixel on the wall and drill four 6mm holes. Take out all four plastic anchors and hammer them into the holes you just drilled. Take the four Type 1 screws and fasten them onto the four plastic anchors.



Step 2. Slide the BitPixel slowly downward on the exposed screw heads until it is secured in place.



For the additional setup steps after wall mounting, please refer to Step 2 - 13 in the GENERAL SETUP AND LEGENDS ULTIMATE INSTALLATION section.

Note: The included USB cable is optimized for use with the Legends Ultimate and may not be long enough for wall mounting installation. Please use a Type A USB cable male to male of the appropriate length (not included).

WARRANTY INFO

The manufacturer warrants this product to be free and clear of defects in the materials and workmanship, under normal residential use and conditions, for a period of thirty (30) days from the original invoice date. Shipping and handling fees are to be paid for by the customer. To make a warranty claim, please submit a service request here: support@atgames.net.

Standard warranty coverage for the AtGames Legends BitPixel does not apply to and is considered invalid due to misuse, improper maintenance, self-repair, tampering, or invasive hardware modifications of any kind, and damages or dysfunction caused by shipping or non-manufacturing related causes.

Note: Standard warranty services are valid with receipt from an authorized retailer. Purchases through third-party sellers and resellers do not fall under the standard warranty program. For warranty support, please contact the third-party seller or reseller where you purchased the product.

SAFETY NOTICE

- Do not submerge the device in water or expose it to extreme heat or to strong magnetic fields. Doing so may cause permanent damage to your device.
- Always use a dry towel to clean the device.
- Transformers are suitable for indoor use only. Transformers and power supplies for toys are not intended to be used as toys, and the use of these products by children shall be under the full supervision of parents.

FCC STATEMENT

This equipment has been tested and found to comply with the limits for a Class B digital device, pursuant to Part 15 of the FCC Rules. These limits are designed to provide reasonable protection against harmful interference in a residential installation. This equipment generates, uses and can radiate radio frequency energy and, if not installed and used in accordance with the instructions, may cause harmful interference to radio communications. However, there is no guarantee that interference will not occur in a particular installation. If this equipment does cause harmful interference to radio or television reception, which can be determined by turning the equipment off and on, the user is encouraged to try to correct the interference by one or more of the following measures:

- Reorient or relocate the receiving antenna.
- Increase the separation between the equipment and receiver.
- Connect the equipment into an outlet on a circuit different from that to which the receiver is connected.
- Consult the dealer or an experienced radio/TV technician for help.

Changes or modifications not expressly approved by the party responsible for compliance could void the user's authority to operate the equipment.

CAN ICES-3 (B)/NMB-3(B)