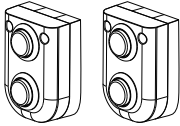
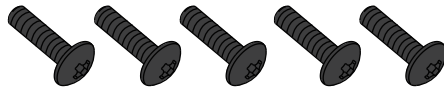


Pinball Kit Assembly Guide

Parts:

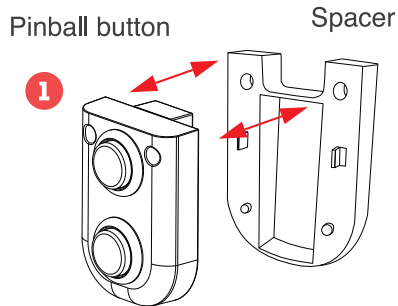


Pinball button



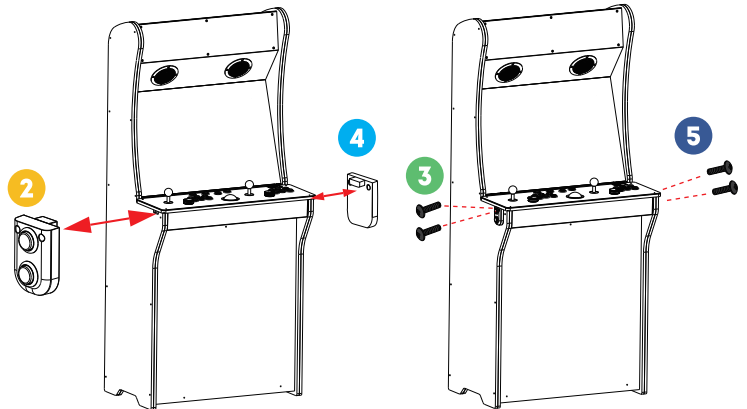
Screws (2 per button, 1 spare)

► For Legends Ultimate (HA8801):



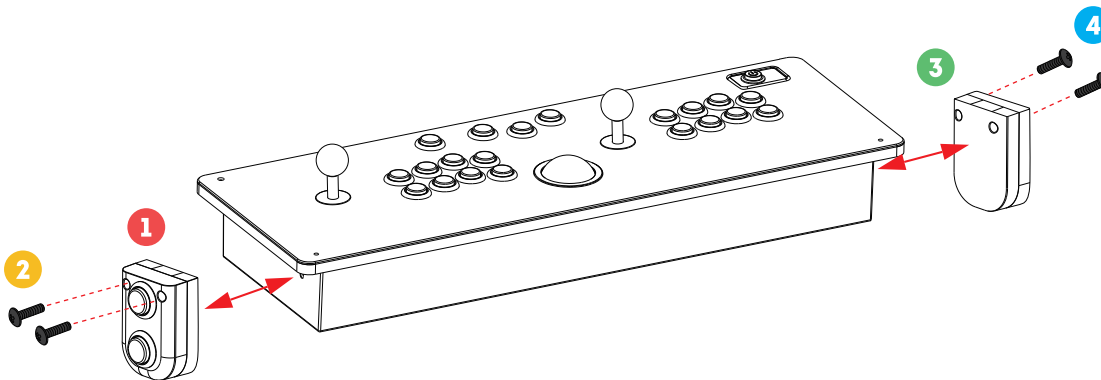
Step 1. Detach the *spacer, which is not needed on the Legends Ultimate, from the back of the pinball buttons.

*Note: The spacer should be saved for future use with the Gamer series of products (see below).



Step 2. Install the pinball buttons on both sides of the cabinet.

► For Legends Gamer Series:



Step 1. Install the pinball buttons (including the spacer) on both sides of the control panel.